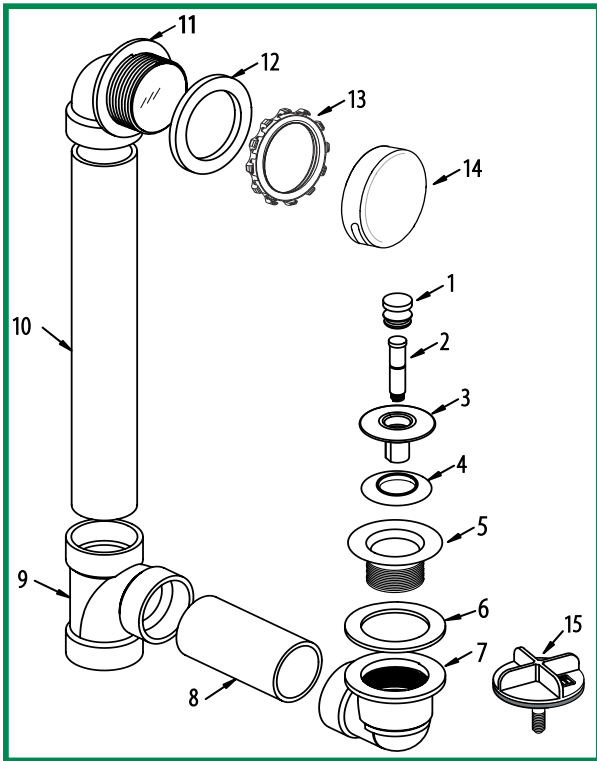


Instructions for Installing WATCO Innovator® Bath Wastes



Step 1: Cut the 1½" Schedule 40 pipes (*Item 8 and Item 10*) to the desired lengths to fit the tub.

Step 2: Using the proper solvent cement, assemble the bath drain pipes and fittings (*Item 7 thru Item 11*).

Step 3: Place foam gasket (*Item 12*) onto overflow elbow (*Item 11*).

Step 4: Insert overflow elbow and foam gasket assembly into the tub overflow hole from the back of the tub.

Step 5: Screw on retainer nut (*Item 13*) from inside of tub. **HAND-TIGHTEN ONLY.**

Step 6: Secure drain elbow (*Item 7*) and drain flange gasket (*Item 6*) under the tub by screwing in the strainer body (*Item 5*) through tub drain hole from inside the tub.

If not testing the bath waste, skip to Step 8.

Step 7: Screw the strainer test plug (*Item 15*) into the strainer body (*Item 5*) and test the system. Once testing is complete, remove the strainer test plug (*Item 15*).

Step 8: Cut away the orange test membrane from the overflow elbow (*Item 11*).

Step 9: Snap on the overflow plate (*Item 14*) with the slot facing downward.

Step 10: Install the stopper assembly (*Item 1 thru Item 4*) into the strainer body (*Item 5*).
Note: Items 1 thru 4 may vary depending on the type of stopper assembly being used.

WATCO MANUFACTURING COMPANY

1220 South Powell Road • Independence, MO 64057-2724

Phone: 816-796-3900 • 800-821-8576

Fax: 816-796-0875 • 800-399-2826

www.watcomfg.com



Always A Step Ahead

Innov. Inst. Rev. 6/09