

INSTALLATION INSTRUCTIONS

500 Series, TRIP LEVER type, ABS or PVC Pipe

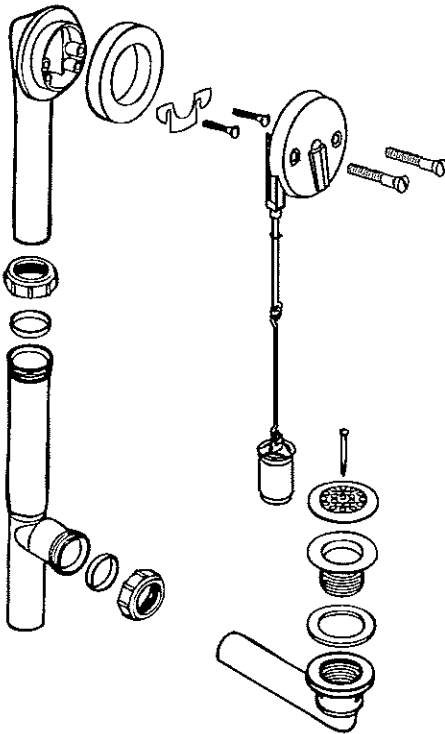
600 Series, TRIP LEVER type, ABS or PVC Pipe

501/502 Series, TRIP LEVER 17 & 20 Gauge Brass Pipe

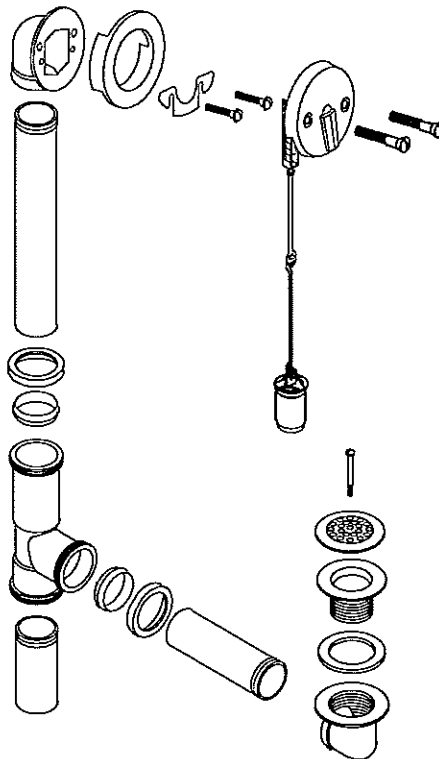
1. See reverse side for Trip Lever variations. Apply plumbers putty** around bottom side of strainer body flange. Insert strainer body through drain hole in bottom of tub. Place drain ell gasket on drain ell on outside of tub. Thread strainer body into drain ell. Use strainer body tool or plier handles to tighten. Remove excess putty.
2. Slide slip nut, then plastic or brass washer (ferrule) onto drain ell. Make sure thick side of washer is toward nut. Slide tee onto drain tube and partially tighten nut.
3. Place overflow washer on overflow ell. Slide slip nut, then plastic or brass washer (ferrule) onto overflow drain tube. Insert into tee. Adjust so that overflow ell is snug against overflow hole in tub and long portion of tee is vertical with floor. Hand tighten both nuts as much as possible, then another 1/8 turn with wrench.
NOTE: If brass ferrules are used joints can be soldered. DO NOT solder if plastic washers are use.
4. Start the two retainer plate screws in the bottom two holes in the overflow ell. Hang the retainer plate over the screw heads and tighten the screws until the retainer plate makes contact with the interior tub wall.
5. Install overflow plate and drop cylinder assembly, (see variations on reverse side) with screws provided.
6. Adjust drop cylinder assembly to insure no leaks to drain when in closed position.

****CAUTION: Avoid contact of plumbers putty with
ABS plastic parts.****

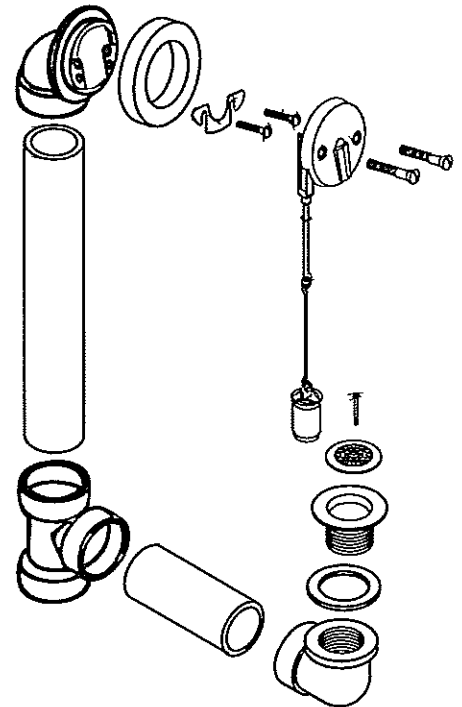
Trip Lever, 500 Series



Trip Lever, 501/502 Series



Trip Lever, 600 Series



Always A Step Ahead

WATCO MANUFACTURING COMPANY

1220 South Powell Road,
Independence, MO 64057-2724
A Division Of WCM Industries, Inc

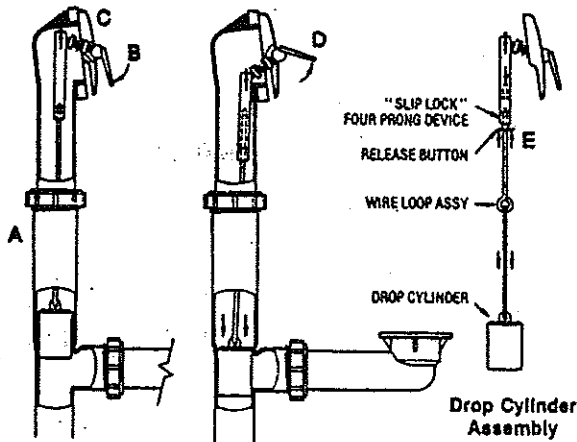
Trip Lever Options

SLIP LOCK, Suffix SL: (Patent #5394572)
QUICK ADJUST, Suffix TQ (Patent #4352213)
TRIP LEVER, Suffix TL, (Patent #4352213)
POP-UP, Suffix PO

SLIP LOCK

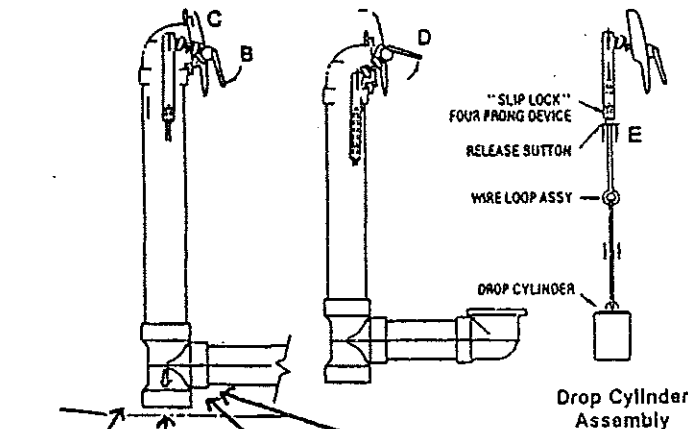
SLIP LOCK Installation

- Install bath waste assembly in normal sequence.
- Insert drop cylinder assembly down overflow with trip lever in down (open) position.
- Screw overflow plate into overflow drain.
- Push trip lever firmly to up (closed) position to set drop cylinder.
- To readjust or lengthen drop cylinder assembly, slide release button up to SLIP LOCK four prong device and push hard while pulling wire loop assembly in opposite direction.



MODEL 600 - SLIP LOCK INSTRUCTIONS

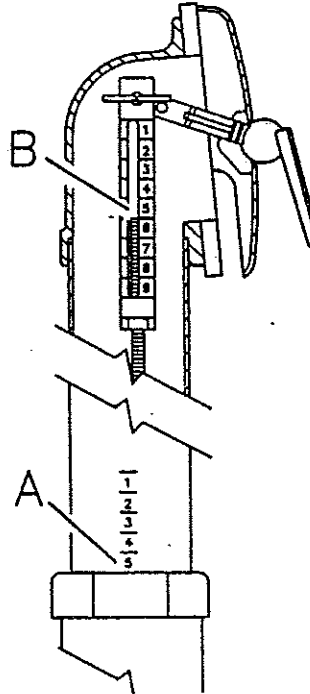
- Install bath waste assembly in normal sequence.
- Insert drop cylinder assembly down overflow with trip lever in down (open) position.
- Screw overflow plate into overflow drain.
- Push trip lever firmly to up (closed) position to set drop cylinder.
- To readjust or lengthen drop cylinder assembly, slide release button up to SLIP LOCK four prong device and push hard while pulling wire loop assembly in opposite direction.



****IMPORTANT WARNINGS****

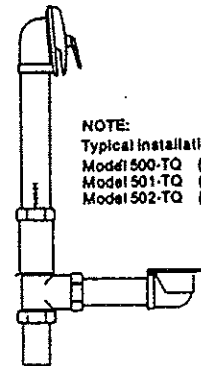
- * ARROW ON TEE MUST BE IN DOWN DIRECTION
- * DO NOT ALLOW SLOVENT CEMENT TO ENTER TEE CAVITY

QUICK ADJUST™



QUICK ADJUST™ Installation

- Establish rough-in length at overflow ell scale.
- Adjust threaded rod end on the linkage clevis until the number matches the number on the overflow ell scale.



NOTE:
 Typical installation for
 Model 500-TQ (ABS or PVC)
 Model 501-TQ (17 Ga Brass)
 Model 502-TQ (20 Ga Brass)



WATCO.

..Always A Step Ahead

Form TL-Inst-9818